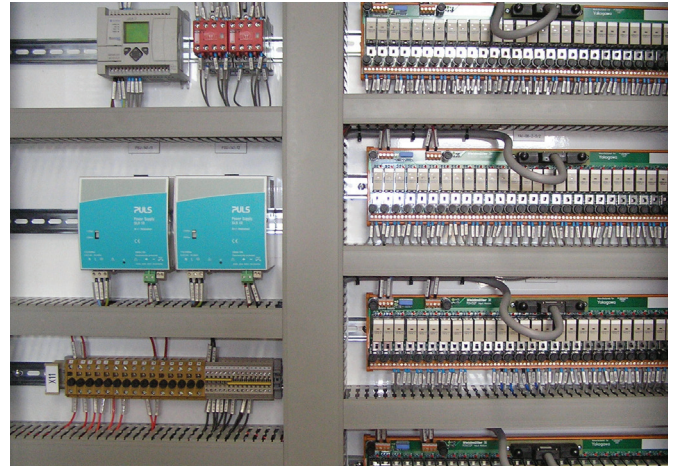


COMPANY PROFILE



GENERAL INFORMATION

Elite Electrical Controls was created in April 2003 by Russell and Neil Mair, the company specialises in the building and installation of Switchboards and Control Panels. Elite Electrical Controls combines the diverse electrical knowledge of the two brothers, which stems from a wealth of experience and diversity in the Electrical Industry.

OPERATIONS

Elite Electrical Controls is a Specialist Switchboard and Control Panel Builder and Installer for the Industrial Sector. From drawings and designs, they organise the sheet metal work and piece together your switchboards and control panels with painstaking accuracy and high quality workmanship.

No matter the size or degree of difficulty involved in the construction of your switchboard or control panel, Elite Electrical Controls are well equipped to deliver the result you need.

We can also assist in design layout to maximize full usage of an enclosure.

Some of the specific elements we can incorporate into your switchboards and control panels include:

- ✦ PLC's
- ✦ Power Supplies
- ✦ Relays
- ✦ Timers
- ✦ Contactors
- ✦ Overloads
- ✦ And any other requirements specified by your plans

Once your switchboard or control panel is built, Elite Electrical Controls can deliver anywhere across Australia or install direct onsite in the Brisbane area.

All completed switchboards and control panels are accompanied by Component Assembly Inspection Sheets and Tasks to be Completed Sheets.

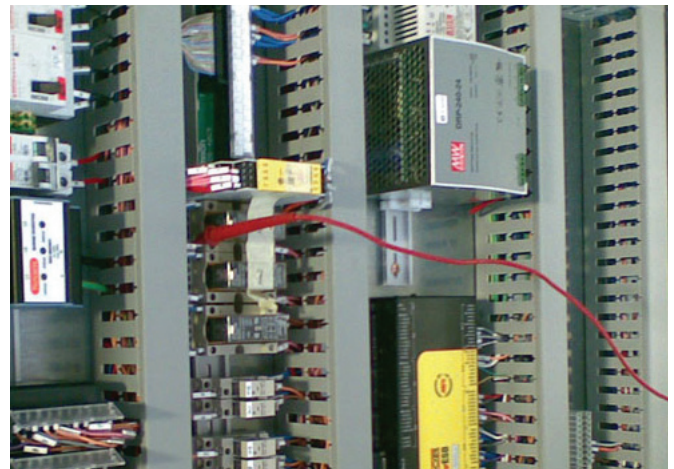
Phone **+617 3823 2880**
Fax **+617 3823 2887**
Mobile **0439 881 822**
Email **russell.mair@eliteelectrical.net.au**

EliteElectrical.net.au

P.O. Box 1749
Capalaba QLD 4157

Unit 1/4 Tombo Street
Capalaba QLD 4157

COMPANY PROFILE



EXPERIENCE

Since forming our Company we have been involved in a variety of Projects ranging from:

- ✦ Installations in Food and Beverage, Petrochemical and Water Treatment environments
- ✦ Installation work on Co-Generation Plants that use landfill gas or effluent as fuel for providing power to the Energex grid. Most notably, we provided the Electrical work on the Gas engines used for remote power for compressor stations
- ✦ Installation of Electrical Control Panels on different Engines, including Caterpillar, MTU Detroit, Waukeschau and Jenbacher Engines
- ✦ Installation of Process Panels for the Mining Industry

These projects incorporated a wide range of Electrical Installations, including:

- ✦ Building and installing of complete PLC and Motor Control Centres
- ✦ Engine Harness Control wiring (thermocouples, pressure and temperature transmitters)
- ✦ Alternator Cabling ranging from 6mm to 630sqmm rubber flexible cable
- ✦ Installation of Variable Speed Drives
- ✦ EEHA Certified Installations in Hazardous areas
- ✦ Fire, Gas, Smoke and Heat detection
- ✦ Instrumentation and pneumatics
- ✦ Interface cabling from Switchboards to Generator Module, including Pump, Controls, light, power and communication
- ✦ Variety of cable installations, including Cat5, Beldon, Instrumentation, EMC, Steel Wire Armoured, XLPE, Rubber Insulated, and Radox

Phone +617 3823 2880
Fax +617 3823 2887
Mobile 0439 881 822
Email russell.mair@eliteelectrical.net.au

EliteElectrical.net.au

P.O. Box 1749
Capalaba QLD 4157

Unit 1/4 Tombo Street
Capalaba QLD 4157

COMPANY PROFILE



MATERIALS

Elite Electrical Controls understands that for a switchboard or control panel to function efficiently and reliably, it needs to be constructed from the finest quality materials.

Elite built Switchboards use Legrand fine finger ducting, LS cable and slotted din rail. Devices are secured with tapites as they provide more security than self drilling screws.

Elite door wiring generally consists of a door rail system with ducting and enclosed loom tube for cables.

A Phoenix Plotter is used for terminal and cable identification, while identification of all other components, circuit breakers, relays and contactors is usually supplied by Trefolyte labels.

LOCATION AND SERVICE AREA

The Elite Electrical Controls Workshop is based in Capalaba and consists of a 205sqm floor area, 30sqm mezzanine storage area, pallet racking and forklift. The large floor area allows Elite Electrical Controls' highly trained technicians to be constructing a range of large or small Switchboards at any given time.

- ✦ Switchboards built in the workshop can be delivered anywhere in Australia.
- ✦ Onsite work is limited to the Brisbane area.

STAFF

Elite Electrical Controls is currently manned by a team of six technicians who all take great pride in their work. Their experience and knowledge base spans decades, and all are insured, licenced and certified to conduct Electrical Work.

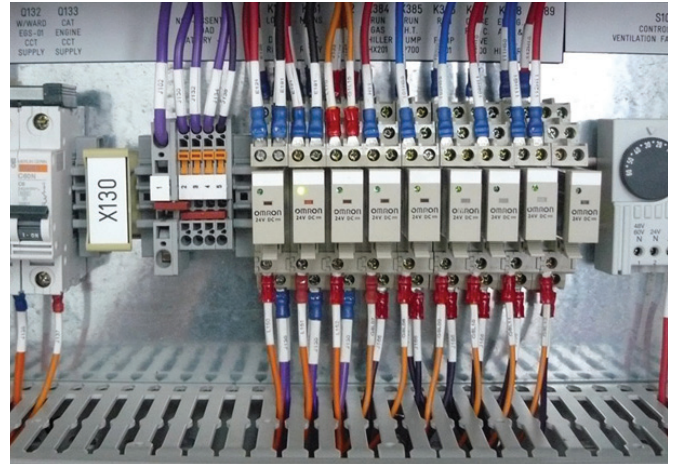
Phone **+617 3823 2880**
Fax **+617 3823 2887**
Mobile **0439 881 822**
Email **russell.mair@eliteelectrical.net.au**

EliteElectrical.net.au

P.O. Box 1749
Capalaba QLD 4157

Unit 1/4 Tombo Street
Capalaba QLD 4157

COMPANY PROFILE



REFEREES

Elite Electrical Controls' quality workmanship and reliable service has resulted in much return business and many recommendations from their current clients. For an unbiased appraisal of our work, please feel free to contact:

George Wood

MIPAC Pty LTD
Senior Instrument Engineer
07 3212 5600
0408 180 571

Stuart Pringle

SE Power Equipment
Managing Director
07 3890 1744

Neil Bain

NTB Design
Manager
07 3865 5796
0407 579 262

Tony Boddice

LMS Generation Pty Ltd
General Manager/Energy Technologies
07 3257 4949
0438 010 021

Phone **+617 3823 2880**
Fax **+617 3823 2887**
Mobile **0439 881 822**
Email **russell.mair@eliteelectrical.net.au**

EliteElectrical.net.au

P.O. Box 1749
Capalaba QLD 4157

Unit 1/4 Tombo Street
Capalaba QLD 4157